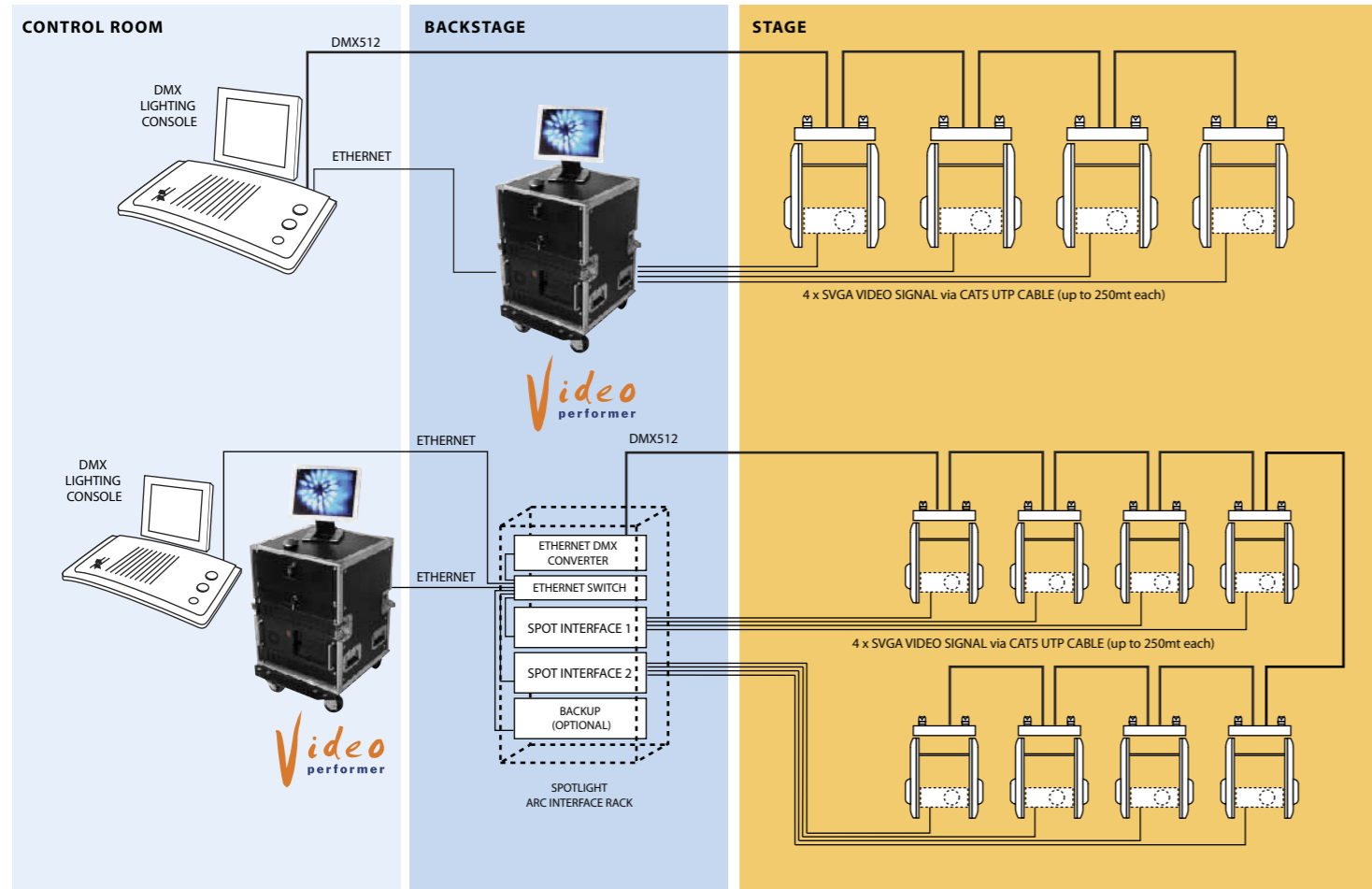


BUILT-IN TCP/IP NETWORKING SUPPORT

A multiple ARC VIDEO PERFORMER system, consisting of several independent motorised fixtures and several video projections to be synchronised, uses an Ethernet network and a PC with a main file that distributes the information to all the peripheral VIDEO PERFORMER of every single unit, so you can build an almost unlimited network of intelligent video projectors, amongst them synchronised and controlled by the same DMX console.



NEW!
Video
performer
RELEASE 2



Hardware Configuration

Spotlight Video Performer Unit

- 19" flight case rack with removable front, back and top lids
- Aluminium 4U Rackmount Case
- Intel Pentium4 processor with Hyperthreading technology
- High Performance Graphic Card based on Nvidia GeforceFx Gpu
- 17" High Resolution LCD Monitor
- SVGA point to point 4x splitter and amplifier
- 512 Mb of DDR sdram
- 80 Gb Serial ATA Hard disk
- Dvd/Cdrw unit for loading and backup of video collections
- Ethernet connection
- Keyboard and Trackball
- Microsoft Windows Xp Professional (fully installed)
- Video Performer Software A1 (fully installed)
- Video Performer Software Network Edition RE (fully installed)
- Video Performer Digital Media Library (fully installed)

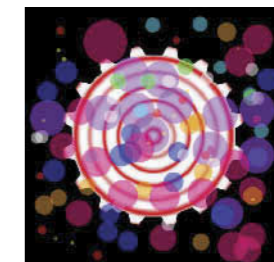
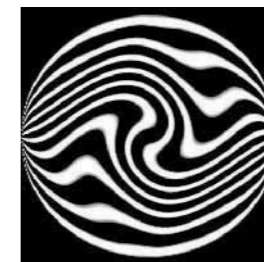
Spot Interface Unit for TCP/IP Networking

- Base Spot Interface Rack
- 19" flight case rack with removable front, back and top lids
 - SVGA point to point 4x splitter and amplifier
 - Ethernet Network Switch (optional)

- n x Spot Interface Unit(s)
- Aluminium 4U Rackmount Case
 - Intel Pentium4 processor with Hyperthreading technology
 - High Performance Graphic Card based on Nvidia GeforceFx Gpu
 - 512 Mb of DDR sdram
 - 80 Gb Serial ATA Hard disk
 - Dvd/Cdrw unit for loading and backup of video collections
 - Ethernet connection
 - Microsoft Windows Xp Professional (fully installed)
 - Spot Interface Software SI (fully installed)



The ARC VIDEO PERFORMER system is the result of the combination of one or more video projectors connected to an exclusive software and hardware system for video editing (Video Performer) that are mounted onto modular yokes, motorised and synchronised with the video (ARC Video). It is thus possible to combine the almost unlimited potential and the fantasy of video projection with the dynamic and space effect typical of moving lights to create a brand new generation of lighting effects.



Video performer

The VIDEO PERFORMER system consists of a powerful graphic workstation, a dedicated software for multimedia handling and a complete series of files with images, animations and video: these allow to create and process an endless series of automated digital projections that could not be obtained so far with the use of conventional effect projectors.

The images, taken from the program files or imported from any other external source, thanks to the video projector, become "intelligent" multimedia projections: the light designer can handle them directly through a DMX light desk by modifying the different parameters: position, shape, rotation, transparency, trichromatism, fading, solid projection, etc. superimposing, processing and mixing more images at the same time to obtain amazing effects that can be created "live" directly on scene or programmed in the desk memory. A unique feature of the VIDEO PERFORMER is the integrated support for TCP/IP networks that allows to make easily installations with several independent motorised fixtures and several video projections.



arc video

The ARC (Automated Remote Control) brings movement into Lighting and Multimedia applications for the Show-business. By combining the power of video projection with the creative possibilities of automated effects lighting, ARC-VIDEO enables the creation of a new generation of automated lights that will deliver many new creative possibilities. The intelligent Video projector combined with the infinite artistic tools of software is the future of the entertainment and architectural lighting.

You can create every colour of light-beam with colour and colour effects. You can use pictures and photos, graphic images and publicity slogans, mixed by 3-D effects and flying text inserts. With standard photo and videoediting software you can create your own show effects very easily and fast. Then you can send it back to your ARC-VIDEO SYSTEM and move it in the space, on the walls with the desired speed control.

MAIN FEATURES

Spotlight's Video Performer combines the DMX World with most powerful hardware and software technologies to obtain a full DMX-PC realtime controlled video edit.

Real-time Control using DMX512 from any moving light console

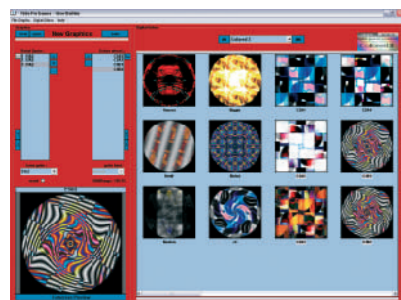
Built-in support for .jpg, .tif and .bmp image files and for .avi and .mpg video files (all Windows codec supported, including DivX and Xvid)

Preinstalled content collections exclusively designed for best video effects

Multiple graphics content (up to 20 layers) can be used simultaneously with Virtual Spot controls

Improved video engine core for faster loading times and smoother playback

EASY TO USE INTERFACE



COMPLETE CONTROL OF THE PROJECTED SCENE

X, Y, Z axis Stage Rotation, X, Y Scale Zoom

X, Y axis Positioning (16 bit), Scaling, and Deformation for all Virtual Spots

3d Rotation Effects

Virtual Spot Advanced Masking (Hard or Soft edges)

Asynchronous Strobing (White time and Black time)

C-M-Y Color Mixing Control

Digital Dimmer

MULTI VIRTUAL SPOT SOLUTION

The use of several VIDEO PERFORMERS controlled by the same light desk, both in the fixed and motorised versions, can produce an endless number of sceneries, as well as complex choreographic space effects for the biggest musical shows.



MAIN FEATURES

Spotlight's ARCVideo range, thanks to the ARC - AUTOMATED REMOTE CONTROL, provide unique performance, in particular:

High Precision Focusing

The DMX control signal uses 2 channels each of 8 bit, giving a control definition higher than 1/10,000 and, thanks to the precise mechanics, can guarantee a physical focusing precision better than 0,01 degrees.

Smooth and progressive movement

The use of C.C. motors, controlled by an encoder for speed regulation and a potentiometer for accurate positioning, allows a smooth movement, with progressive accelerations and decelerations, even with larger videoprojectors.

Total noise-free focusing

Thanks to the use of largely over-sized worm gear motors, the yoke movement is absolutely noise-free. This allows in-show positioning adjustments, without disturbing the audience.

Position maintained - no reset necessary

In the case of power failure, even during the show, all the motorized yokes will maintain their most recent position and settings. Once power is restored, the yokes do not require a "reset" to return to the original position

Possibility of manual positioning

The provision of a clutch system built onto the motors allows for Pan and tilt adjustments to be made manually without causing damage, even when the power to the videoprojector is on. This also acts as a safety feature. For example, if the projector were to be accidentally hit by a piece of scenery, the motors will move freely, reducing the risk of damage to unit.

Flexibility of use

The ARC focusing system provides almost total coverage of the stage leaving virtually no dark areas. Over 360° of Pan is obtainable so that full horizon can be covered. The degree of Tilt is greater than 180° making lighting from the grid, to downlight on the stage and even the audience possible. It is also possible to include in the software a dedicated function in case the videoprojector specifications does not allow it to work positioned upside down. The ArcVideo Yokes can be hung on a truss or lighting bar, or placed direct on stage.